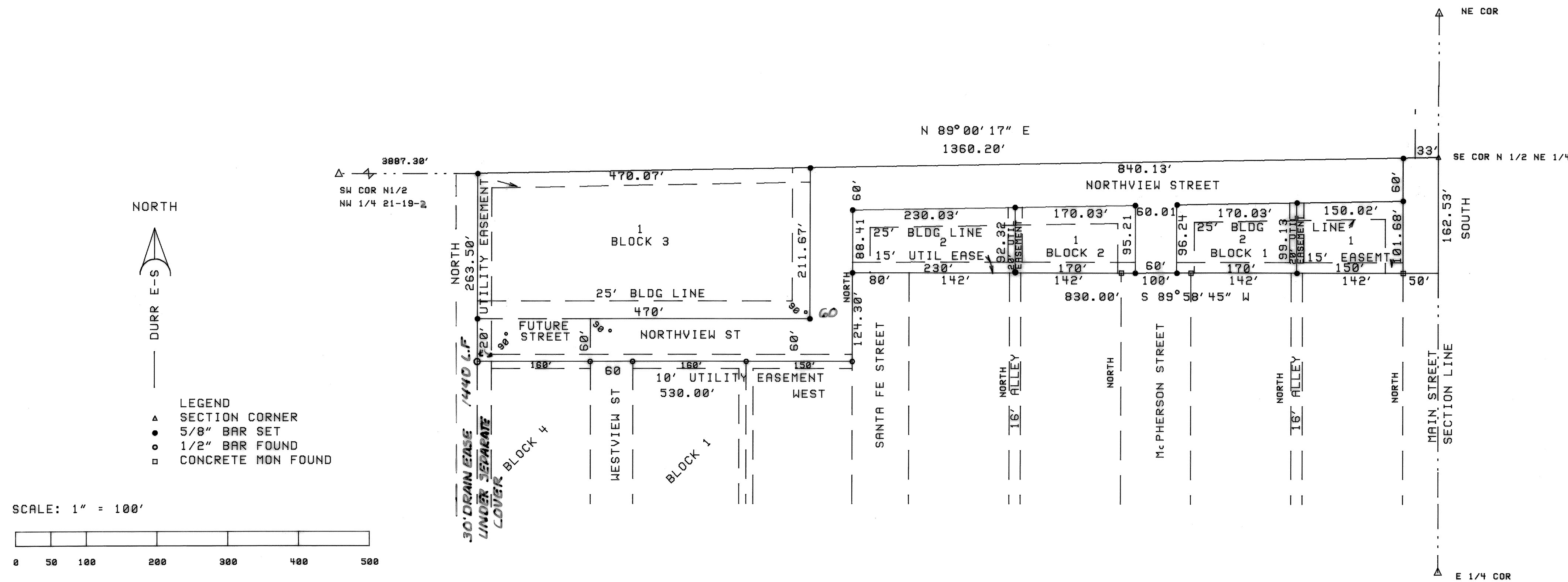


HOME TELEPHONE ADDITION

TO THE CITY OF GALVA, McPHERSON CO. KS.
ALL IN NORTH 1/2, SEC 21, T 19 S., R 2 W., 6TH PM



LEGAL DESCRIPTION:

A TRACT OF LAND IN THE NORTH HALF OF SECTION 21, TOWNSHIP 19 SOUTH, RANGE 2 WEST OF THE 6TH PRINCIPAL MERIDIAN, McPHERSON COUNTY, KANSAS;

BEGINNING AT THE NORTHEAST CORNER OF THE SOUTH HALF OF THE NORTHEAST QUARTER OF SECTION 21, TOWNSHIP 19 SOUTH, RANGE 2 WEST OF THE 6TH PM; THENCE SOUTH, ASSUMED, A DISTANCE OF 162.53 FEET; THENCE S 89° 58' 45" W, A DISTANCE OF 830.00 FEET; THENCE SOUTH, A DISTANCE OF 124.30 FEET TO THE NORTHEAST CORNER OF GALVA LUMBER ADDITION TO GALVA; THENCE WEST, A DISTANCE OF 530.00 FEET TO THE NORTHWEST CORNER OF GALVA LUMBER ADDITION; THENCE NORTH, A DISTANCE OF 263.50 FEET; THENCE N 89° 00' 17" E, A DISTANCE OF 1360.20 FEET TO THE POINT OF BEGINNING; TRACT CONTAINS 6.22 ACRES.

SURVEYOR'S CERTIFICATE:

I, DUNCAN W DURR, DO HEREBY CERTIFY THIS PLAT TO BE A TRUE, CORRECT, AND COMPLETE REPRESENTATION OF THE PROPERTY DESCRIBED HEREON, AND THAT THE LOT, BLOCK AND SUBDIVISION CORNERS HAVE BEEN ESTABLISHED AND MARKED WITH PERMANENT MONUMENTS AS SHOWN HEREON, AS SURVEYED BY ME THIS 22 DAY OF OCTOBER, 1998.

Duncan W Durr
 DUNCAN W DURR RLS 697

DEDICATION:

THE UNDERSIGNED, HOME TELEPHONE COMPANY, INC., ROBERT BALDWIN PRESIDENT, DO HEREBY CERTIFY THAT THEY ARE THE OWNERS OF THE PROPERTY DESCRIBED HEREON AND HAVE SUBDIVIDED THE SAME INTO LOTS AND BLOCKS IN THE MANNER SHOWN ON THIS PLAT. SAID SUBDIVISION SHALL BE KNOWN AS HOME TELEPHONE ADDITION TO THE CITY OF GALVA, McPHERSON COUNTY, KANSAS.

Robert Baldwin
 ROBERT BALDWIN, PRESIDENT HOME TELEPHONE COMPANY INC.

NOTARY PUBLIC CERTIFICATION:

STATE OF KANSAS
 COUNTY OF McPHERSON SS

THE FOREGOING INSTRUMENT WAS ACKNOWLEDGED BEFORE ME THIS 10th DAY OF December, 1998, BY HOME TELEPHONE COMPANY INC., ROBERT BALDWIN PRESIDENT.

Nancy L Flaherty
 NOTARY PUBLIC



EASEMENTS:

EASEMENTS SHOWN BY DASHED LINES ON THIS PLAT ARE HEREBY DEDICATED FOR PUBLIC USE AND MAY BE EMPLOYED AS A COVENANT RUNNING WITH THE LAND FOR THE PURPOSE OF INSTALLING, REPAIRING, REINSTALLING, REPLACING AND MAINTAINING SEWER LINES, WATERLINES, GAS LINES, ELECTRIC LINES AND POLES, TELEPHONE LINES AND POLES, AND OTHER FORMS AND TYPES OF PUBLIC UTILITIES NOW OR HEREAFTER GENERALLY UTILIZED BY THE PUBLIC.

BUILDING LINES:

BUILDING LINES OR SETBACK LINES ARE HEREBY ESTABLISHED AS SHOWN ON ON THIS PLAT AND NO BUILDING OR PORTION THEREOF SHALL BE BUILT OR OR CONSTRUCTED BETWEEN THIS LINE AND THE STREET LINE.

GOVERNING BODY CERTIFICATE:

STATE OF KANSAS
 COUNTY OF McPHERSON SS

THE DEDICATIONS SHOWN ON THIS PLAT ARE HEREBY ACCEPTED AND THIS PLAT IS HEREBY APPROVED BY THE CITY COMMISSION OF THE CITY OF GALVA, KANSAS THIS 2nd DAY OF November, 1998.

H.W. Ford
 H.W. FORD, MAYOR

Connie Thiessen
 CONNIE THIESSEN, CITY CLERK

CITY ATTORNEY'S CERTIFICATE

STATE OF KANSAS
 COUNTY OF McPHERSON SS

THIS PLAT OF HOME TELEPHONE ADDITION TO THE CITY OF GALVA HAS BEEN SUBMITTED TO ME AND THE SAME IS HEREBY APPROVED THIS 8th DAY OF December, 1998.

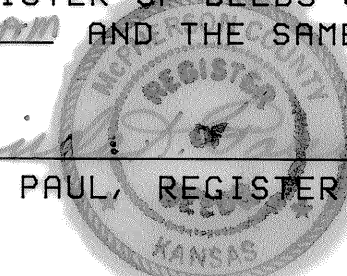
Harry Weelborg
 HARRY WEELBORG, CITY ATTORNEY

REGISTER OF DEEDS CERTIFICATE:

STATE OF KANSAS
 COUNTY OF McPHERSON SS

THIS IS TO CERTIFY THAT THIS INSTRUMENT WAS FILED FOR RECORD IN THE REGISTER OF DEEDS OFFICE ON THE 14th DAY OF December, 1998 AT 2:00 PM AND THE SAME IS DULY RECORDED IN Plat 5, PAGE 51

Linda K Paul
 LINDA K PAUL, REGISTER OF DEEDS



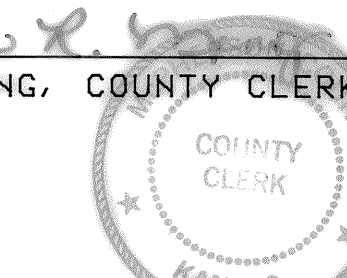
COUNTY CLERK CERTIFICATE:

THIS IS TO CERTIFY THAT AT THE TIME OF FILING THIS CERTIFICATE ALL CURRENTLY DUE AND OWING TAXES AND SPECIAL ASSESSMENTS HAVE BEEN PAID THIS 14th DAY OF December, 1998.

Susan L Meng
 SUSAN L MENG, COUNTY CLERK

ENTERED ON TRANSFER RECORD THIS 14th DAY OF December, 1998.

Susan L Meng
 SUSAN L MENG, COUNTY CLERK



FINAL PLAT
 HOME TELEPHONE
 ADDITION
 DURR ENGINEERING & SURVEYING, HUTCHINSON, KANSAS
 DRAWN BY: DURR PROJ: 98118 SHEET 1 OF 1

Ord. #313 designating street M-310pp. 6/88